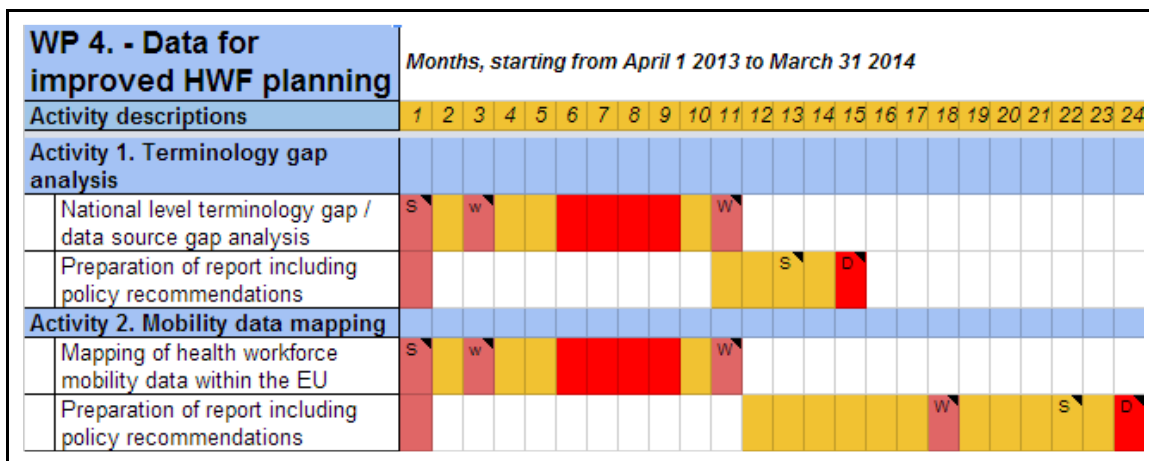


## Background information

### The timing of the the Survey and the Deliverables

W - Workshop, D - Deliverable



As the above GANTT chart shows, **the timing of the Survey** is between September and December 2013 (**in red**) and the Terminology gap analysis final report is to be submitted in **June 2014** and the Mobility data mapping report in **March 2015 (also in red)**.

### Your contribution to the Survey

All Associated Partners of WP4 are to contribute 3 days to fill out the Survey. These countries are: UK, Italy, Spain, Portugal, Greece, Poland, Iceland, Germany, Finland, Slovakia, Belgium, Netherlands. Some Collaborating Partners are also filling out the Survey.

Countries with additional Mandays allocated to the two Activities as well as the two international organisations represented in WP4, the Union of European Medical Specialists and the European Federation of Nurses are to contribute to the analysis of the results of the Survey.

The Manday distribution of the two Activities:

WP 4. - Data for improved HWF planning	Manday contributions by country																
	Day	HU	UK	IT	ES	PT	EL	PL	IS	DE	FI	SK	BE	NL	EFN	UEM	
<b>Activity 1. Terminology gap analysis</b>	<b>373</b>																
National level terminology gap / data source gap analysis	293	197	3	10	3	20	3	15	3	3	15	3	3	5	5	5	
Preparation of report including policy recommendations	80	50		5		5		5			5				5	5	
<b>Activity 2. Mobility data mapping</b>	<b>299</b>																
Mapping of health workforce mobility data within the EU	222	150	10				10			10		20	10	2		10	
Preparation of report including policy recommendations	77	45	12							10		10					